
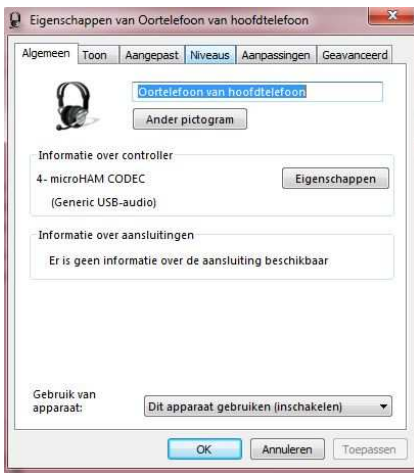
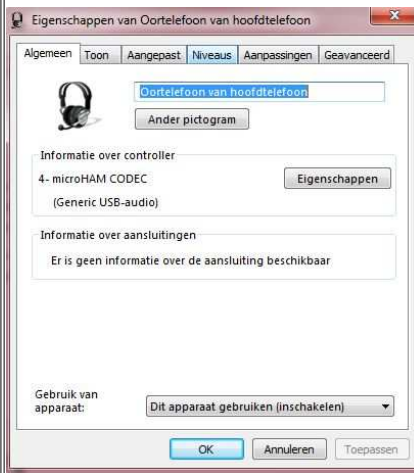


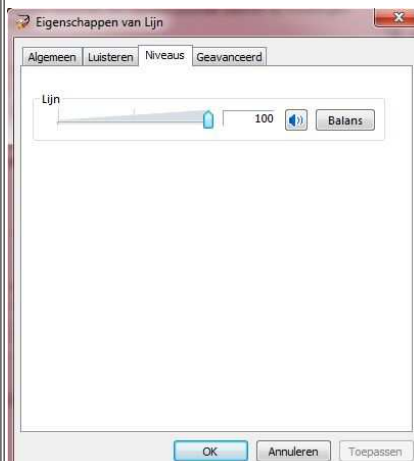





## ROS & OPERA mode with the Micro KEYER II

Last Update: 31 January 2012

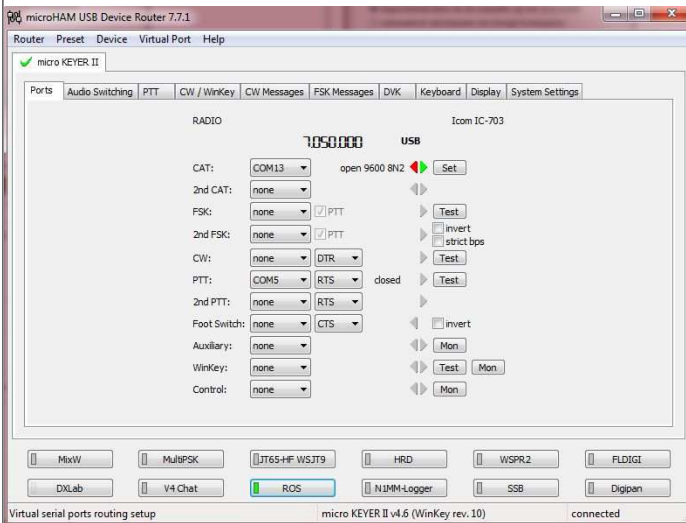
It's not always easy to have the right settings for all the different of HAM software and for my IC-703 TRX. I use Windows 7 Professional 64 bits, and have try different of settings in the Audio configuration of Win7 and in the Micro KEYER II interface for use the ROS and the OPERA program of EA5HVK, and found the settings below for me the best.

<p>I have first open via Start my Config file and then AUDIO "To Play" selected earphone of headset and double click it,</p> 	<p>Clicked on "Level"</p> 	<p>And I have set all the levels to 100, and clicked on OK</p> 
<p>Now I have click on "To Play" and double clicked on "Line"</p> 	<p>Clicked on "Level"</p> 	<p>And I have set the level to 100, and clicked on OK</p> 
<p>I have double clicked on Microphone of headset</p> 	<p>Clicked on "Level"</p> 	<p>And I have set the level to 100, and clicked on OK</p> 

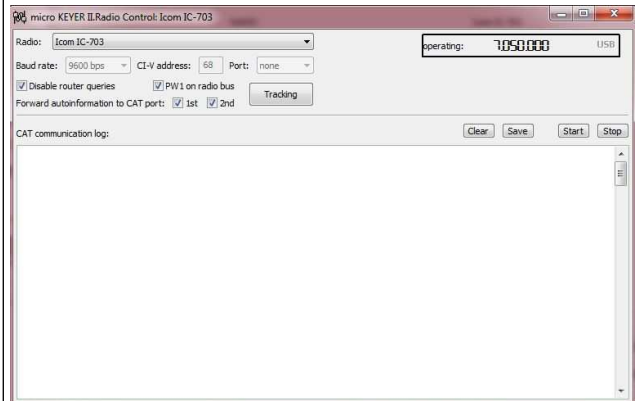
In the settings of "Microphone of headset" and de settings in "Line" by the menu "Listening" I haven't enabled 'Listening to this Device'



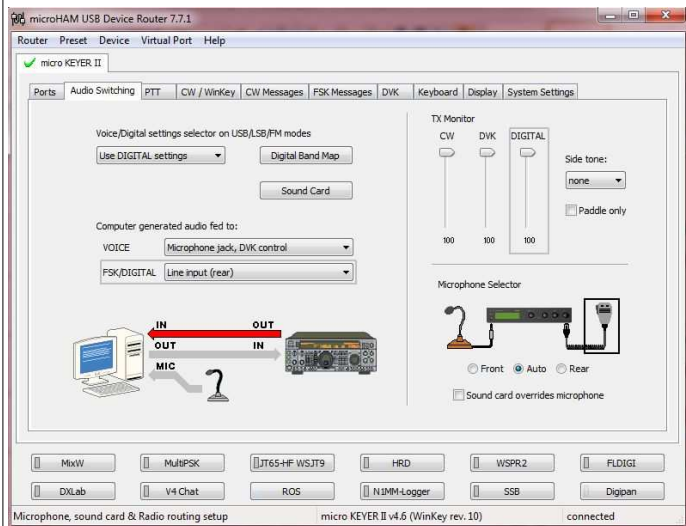
In "Ports", I have the next setup



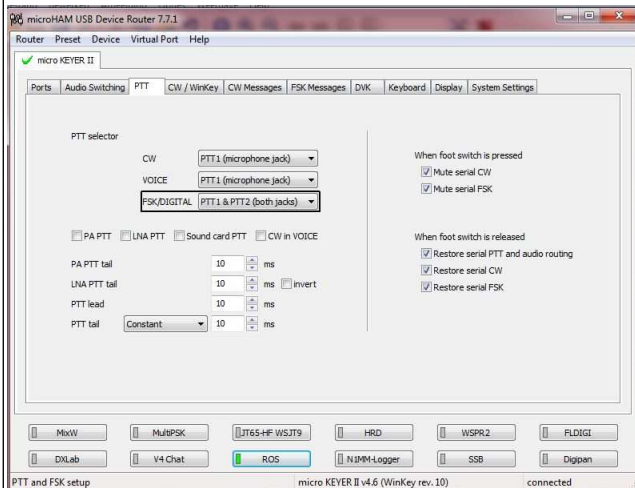
Click on the "Set" just at "open 9600 8N 1" I have set the next setup.



In "Audio Switching directory" I have the next setup.



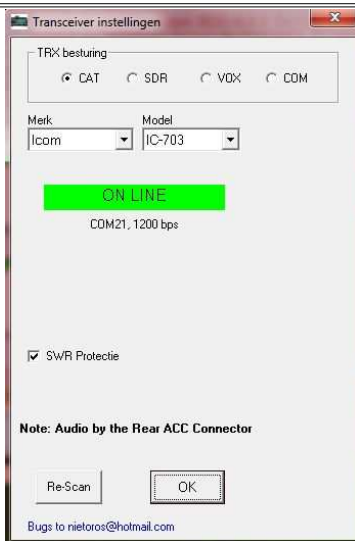
In "PTT" I use the next setup



**Remarks:**

Sometimes when I try to connect my CAT I become some error message like "Close HAM Radio DeLuxe". But I haven't HRD load at the moment. So after some investigation I found out that I have Commander running and MixW. So I closed both and do a Re-Scan for connect to my CAT. And now the ROS program find my CAT and I become the message "ON LINE" and all is working fine

Yes, I see that he use COM21 with 1200 bps but it's work very well and I can change from Frequenz via the Freq. macro's from the ROS program and I can receive and transmit in ROS mode, that's what count hi..



The soundcard setting are as follow



Like I wrote on the begin of this message it's also the best settings for me, so that I can use ROS mode (program) with the MicroKEYER II interface and this in connection with DXKeeper for logging the QSO's.

**ROS mode**

### OPERA mode

73 de Pat ON2AD

PS: SRI for some translate errors because My OS is in the Dutch language and some text is free translated, and my English isn't the best.

[Close Window](#)